

# FEATURES



**X PRO is the first anti-snap bracket on the market**  
Considerably reduces the chances of unintentional snagging of lines, brides, etc. on your camera.

**Just attach the X PRO Base to your helmet and it will allow you to quickly detach and secure the helmet camera holder.**

**Allows you to put and remove the camera from your helmet very easily and without tools.**

## X PRO BASE COMPATIBLE WITH ALL HELMETS



**QUICK RELEASE**

**LOW PROFILE BASE**

**USE YOUR HELMET IN TUNNEL**



## X PRO BASE COMPATIBLE WITH ALL CAMERA HOLDERS



**XPRO.AR**

# TO INSTALL YOU NEED



PAPER TAPE  
MEASURING TAPE

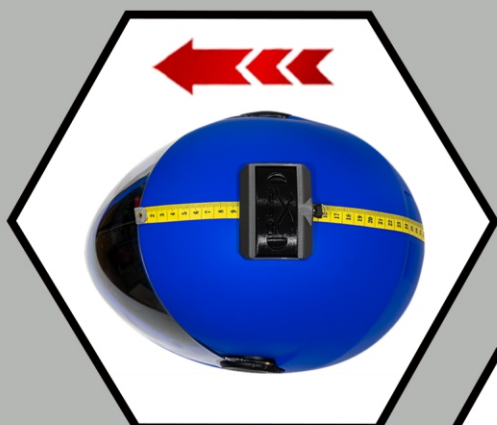


CLEAN THE SURFACE WITH  
ISOPROPYL ALCOHOL

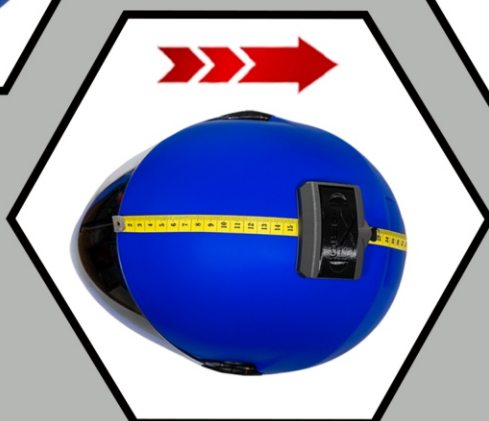
If you belly fly it will help you to stick the base slightly back. If you freefly or angle fly, it will help you to have a better camera view by sticking it a little further in front of the helmet.

This depends mostly on body position in relation to the point of the camera view, but sticking it at an intermediate point should be compatible with both disciplines.

Freefly AngleFlyer



Belly Flyer



Freefly  
Angle Flyer



Due to the proven high strength of the adhesive, we recommend not to drill the helmet unnecessarily.

**WARNING!**

Do not stick the self-adhesive support if the helmet has been repainted and the paint is not well attached to the original helmet

Avoid touching the surface of the helmet before gluing the BASE.

**IMPORTANT:** Do not stick it on very humid days or with below temperatures 10 ° C. The adhesive acquires its maximum adhesion after some time of having stuck it, for what is recommended Wait at least 24 hours.

Don't jump WITH it the same day.

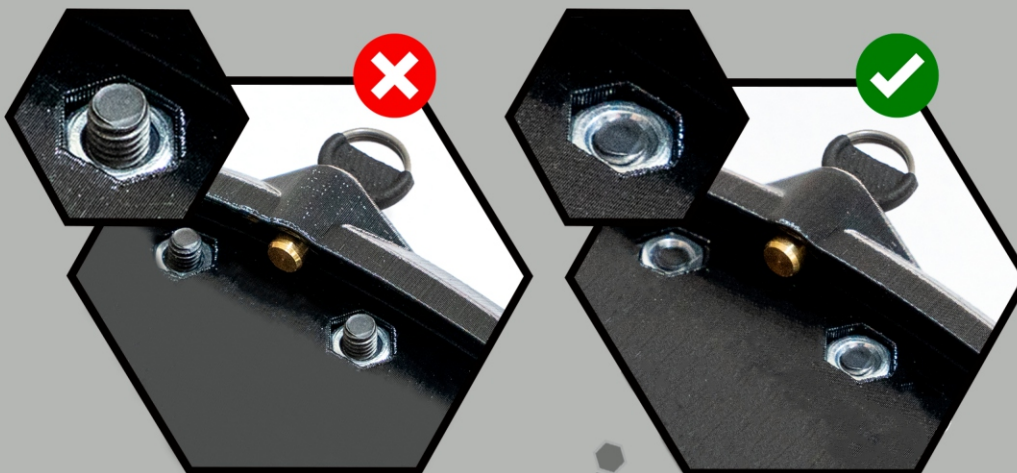
The bracket **MUST** adhere to the surface of the helmet where the curvatures of the helmet and the bracket matches as closely as possible.

It should not be stuck in places on the helmet where the adhesive does not adhere properly.



**Do not remove the red film yet!**

If your stand base is suitable for screwing, it is extremely important that Do not overtighten the screws because you could break the base of the XPRO or your helmet. Screws should **NEVER** protrude from the nut.



# INSTALLATION OF Base X PRO OPEN FACE HELMETS



**1**  
Position X pro mount  
without gluing.



**2**  
Use an asymmetric  
Reference of your helmet.



**3**  
Stick paper tape.



**4**  
Marker center position.



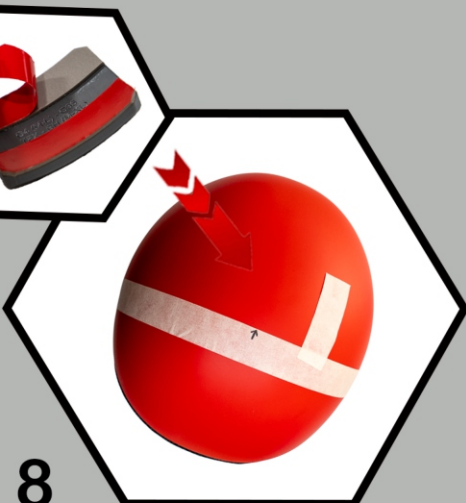
**5**  
Center the base on the mark.



**6**  
Visually check that the camera  
mount is centered.



**7**  
Put the second position mark.

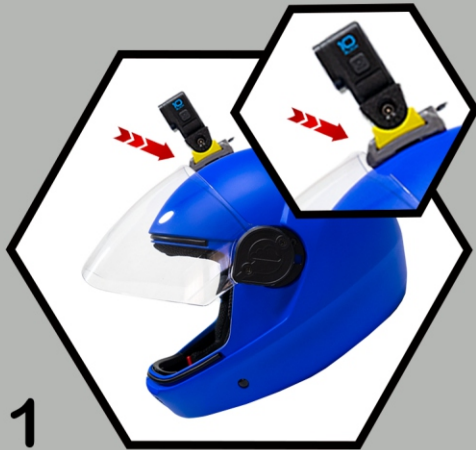


**8**  
Remove the red film  
from the Base X Pro.  
Carefully stick the X Pro base  
to the helmet.



**9**  
Remove the paper tape  
wait 24 hours before jump.

# INSTALLATION OF Base X PRO FULL FACE HELMET



**1**  
Open the visor.  
Position X pro mount without gluing.



**2**  
Stick paper tape.



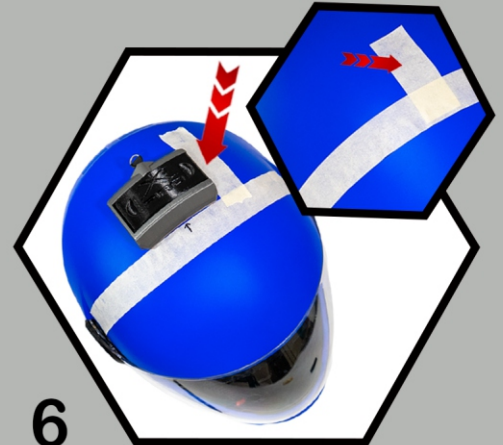
**3**  
Marker center position.



**4**  
Center the base on the mark.



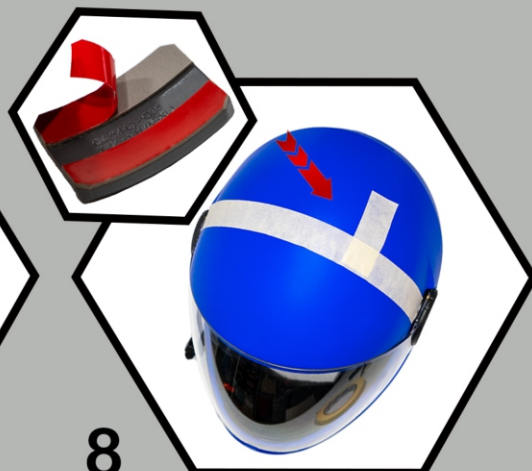
**5**  
Visually check  
that the camera mount is centered.



**6**  
Put the second position mark.



**7**  
Remove the red film.



**8**  
Carefully stick the X Pro base  
to the helmet.



**9**  
Remove the paper tape wait 24 hours  
before jump.

# ASSEMBLING SYMMETRIC

Place the camera on the camera holder

**IMPORTANT:** Do not overtighten the M5 allen screw that connects the camera with the camera holder and the slide. The fit should be firm but not excessively.

Do not tighten the screw without the complete set of camera, camera holder and slide in place.

Some of the pieces could break if they are adjusted without fully assembling the set. The set takes good resistance when everything is together.



Be sure not to force the slide or XPRO Lid before pulling the pin:

1st: unlock the pin.

2nd: remove the camera

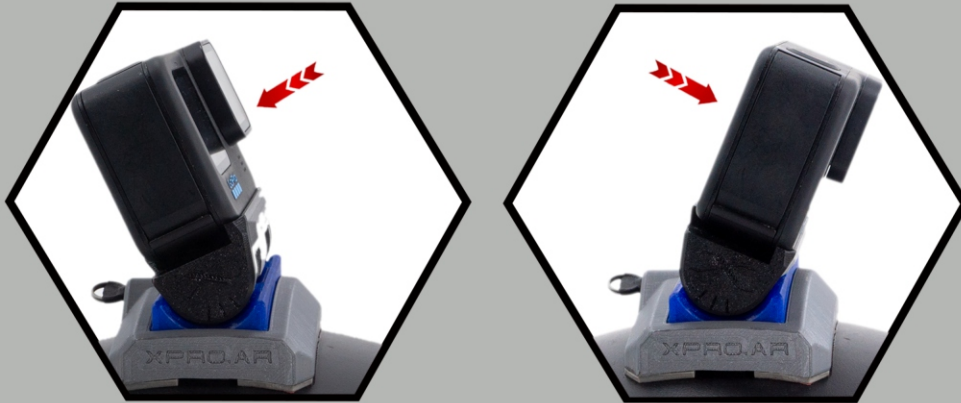
If you notice that the pin gets hard STOP pulling the camera; push it all the way in again and THEN carefully pull the retractable pin to slide camera out.

If you change your camera, you need the correspondig model camera holder.



# FEATURES

## Adjustable aim



You can put the camera pointing backwards, for example to film your openings or to film to your friends flying above or behind you, for example for track, angle or wingsuit jumps.



**DON'T ALTER THE ORIGINAL DESIGN OF OUR PRODUCTS.**

We don't recommend making holes, sand or drill the parts of the mount. Each part has its own design for a reason. Do not modify. We do custom work upon request.

Parts broken due to impacts or alterations do not have a factory warranty.

Our XPRO Camera Mount is guaranteed against manufacturing defects.

Practicing headdown on the wind tunnel net could break the XPRO base as it is not prepared to withstand such abuse and is not covered by our warranty.

### **WARNING:**

Our anti-snag camera mount has been designed for skydiving activities and tested in thousands of jumps by top level skydivers with very satisfactory results.

Yet it could break if hard impacted just like the original mount on your camera.

We keep working on developing and improving our products as best as possible.

**Any question don't hesitate contacting us!!**



**XPRO.AR**

# ASSEMBLING X2 X3 X4



1

Put the camera holder on your camera.



2

Put and tighten the screw.



Be sure not to force the slide or XPRO Lid before pulling the pin:

1 st: unlock the pin.

2 nd: remove the camera

If you notice that the pin gets hard STOP pulling the camera; push it all the way in again and THEN carefully pull the retractable pin to slide camera out.

If you change your camera, you need the correspondig model camera holder.

## FEATURES



Access to menu buttons.



Battery and usb access.



# ASSEMBLING

# VERTICAL CASE



**1** Put the camera holder on your camera.



**2** put the elastic forward.



**5** We recommend using the allen key in this position to avoid over tightening the screw. The fit should be firm but not excessively.



**3** Not disassemble. The screw must be placed opposite of the nut. DO NOT INSERT THE SCREW ON SAME SIDE OF THE NUT



**4** We recommend leaving the elastic at rest when not in use.

Allows you to put and remove the camera from your helmet easily. Be sure not to force the slide or XPRO Lid before pulling the pin:

1 st: unlock the pin.

2 nd: remove the camera

If you notice that the pin gets hard STOP pulling the camera; push it all the way in again and THEN carefully pull the retractable pin to slide camera out.



# ASSEMBLING HARD CASE

Place the camera on the camera holder

**IMPORTANT:** Do not overtighten the M4 allen screw that connects the camera with the camera holder and the slide. The fit should be firm but not excessively.



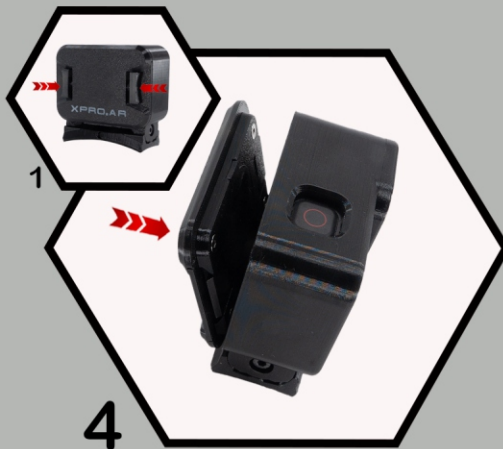
1  
Open the rear lid by pressing both buttons at the same time.



2  
Air tag housing.



3  
Place the camera.



4  
Close the lid by pressing both buttons.



5  
Check that it is well closed.



6  
Correct closed.



7  
Unlock.



8  
Locked.

# ASSEMBLING HARD CASE



9

Not disassemble. The screw must be placed opposite of the nut. DO NOT INSERT THE SCREW ON SAME SIDE OF THE NUT



10

We recommend using the allen key in this position to avoid over tightening the screw. The fit should be firm but not excessively.

Allows you to put and remove the camera from your helmet easily.

Be sure not to force the slide or XPRO Lid before pulling the pin:

1 st: unlock the pin.

2 nd: remove the camera

If you notice that the pin gets hard STOP pulling the camera; push it all the way in again and THEN carefully pull the retractable pin to slide camera out.

